

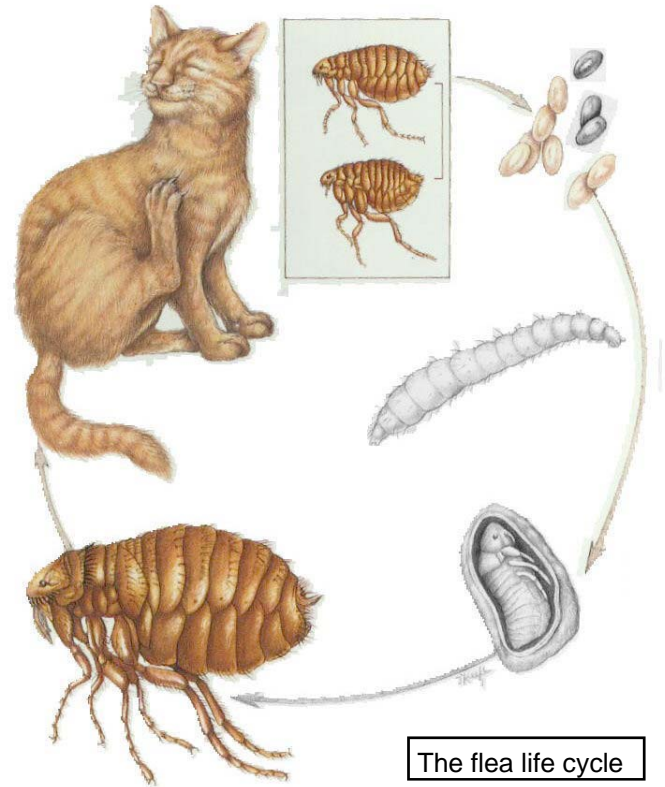


# FLEAS AND YOUR PET

Fleas are small, brown or black, wingless insects with flattened bodies. These blood-sucking insects infest the hair coat of animals, and occasionally will feed on people. They can cause considerable distress and skin irritation. In severe infestations, anemia may result from blood loss. Fleas can also spread the common dog and cat tapeworm, as well as other viral and bacterial diseases.

After taking a blood meal, fleas deposit their eggs on the animal and as the pet moves about, eggs are spread through the environment. A single breeding pair of fleas can produce 20,000 fleas in just three months. Eggs hatch after 2 to 12 days into larvae that feed in the environment. Larvae molt 2 times, and the older larvae spin a cocoon in which they can remain for up to one year. A hungry flea then emerges from the cocoon. The long period in which the larvae remain in the cocoon explains why fleas are so hard to eradicate from the environment.

To eradicate fleas, you must consider the fleas on your pet(s) as well as in the environment. There are many different products on the market to control fleas, all with variable efficacy. These include a variety of topical shampoos and insecticides, oral products, flea collars, and environmental sprays and flea bombs.



## Treatment Recommendations for your Pet(s):

(Remember, **all** pets in the home should be treated)

We recommend using *Frontline Plus*. This is a topical product containing Fipronyl and an Insect Growth Regulator (IGR) S-methoprene. *Frontline Plus* effectively targets all stages of fleas. Fipronyl collects in the oil glands of the skin and hair follicles, and continues to be released from the hair follicles onto the skin and coat, resulting in activity against fleas and ticks for 30 days.

*Frontline* can safely be used on puppies and kittens 8 weeks and older.

## Treatment Recommendations for Your Home:

(Pay special attention to the areas where pets rest and sleep.)

1. Thoroughly vacuum all carpets, chairs, sofas, under furniture and along baseboards twice daily.
2. Discard vacuum bag immediately, or cleanse canister with warm soapy water if bag-less.
3. Wash bedding in hot water.
4. Wash hard floors with soap and water.
5. With moderate to severe infestations, sprays and foggers should be considered. With all commercial flea products, always read and follow labeled directions. Severe home infestations may require a professional exterminator.
6. Repeat above steps in 14-21 days.